

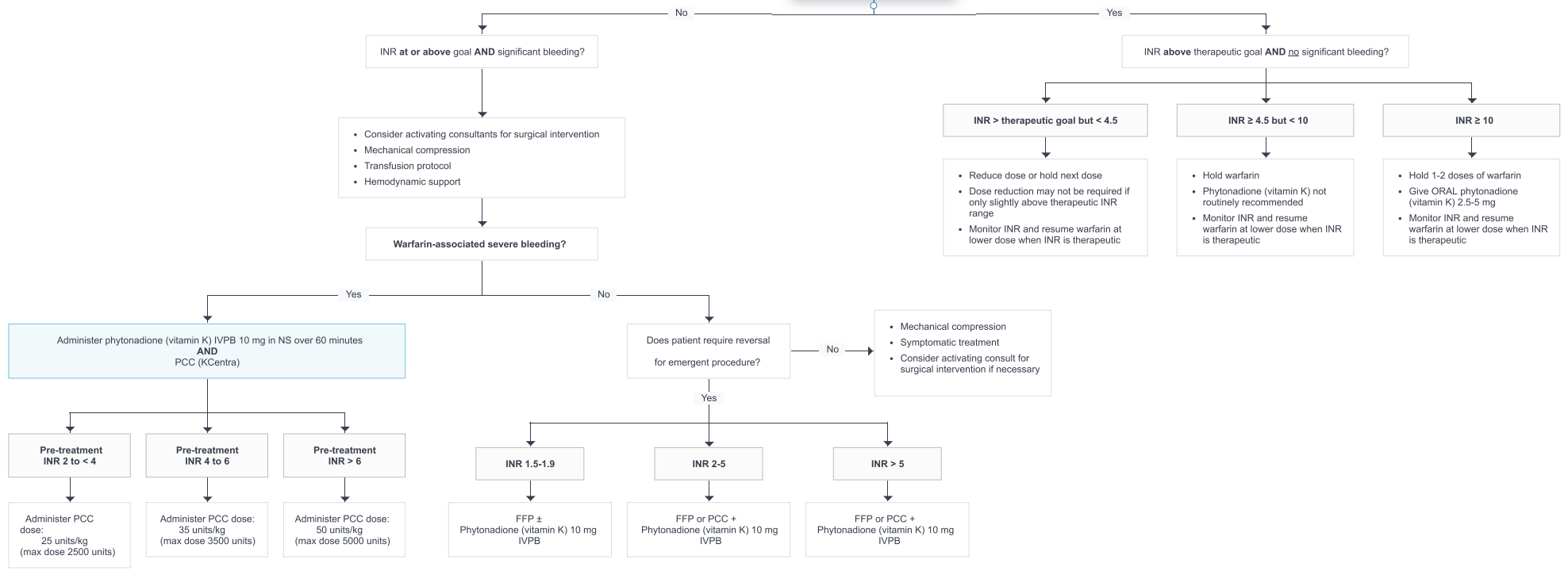
See UC Health Guideline for the Use of Reversal Agent and Factor Products in Acute Bleeding or Trauma (<http://intranet.uchealth.com/Departments/Pharmacy/pdf/PCCGuidelines.pdf>) if you have questions or concerns

Consider administration of 10 mL/kg FFP if patient can tolerate fluid and reversal is not emergent

Suspect warfarin (Coumadin) therapy
AND
Active Bleeding

- Obtain STAT labs ([info](#))
- PT/INR
 - CBC
 - BMP
 - TEG
 - Type and Cross
 - POC INR

POC INR and INR/PT will result in the ED to help guide management as described below. TEG will assist inpatient teams in monitoring anticoagulation.



Created: 2/11/20
Department of Emergency Medicine